

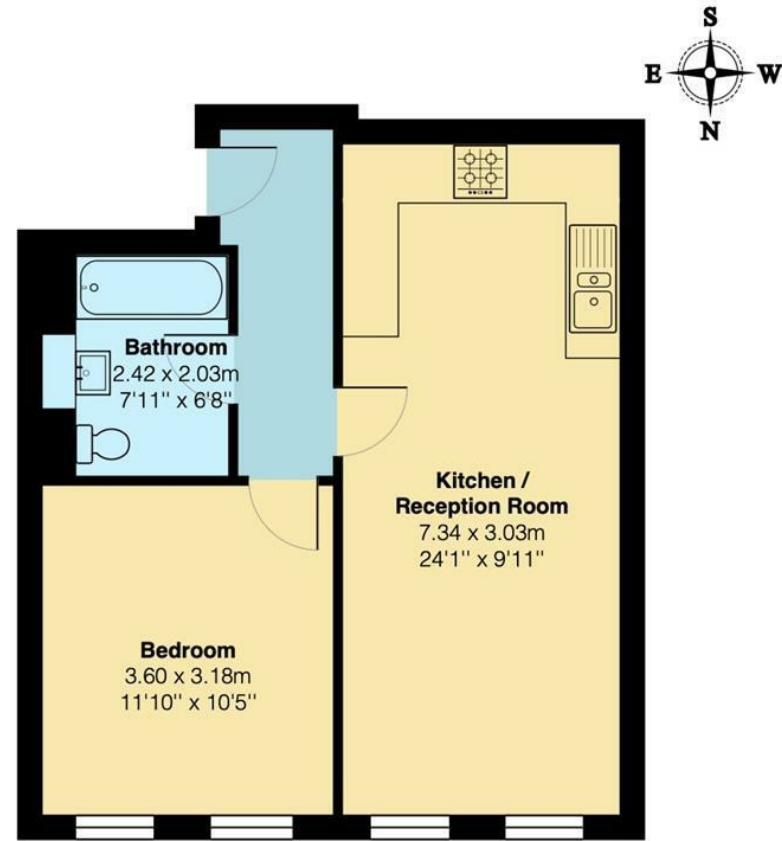
THE STOW BROTHERS

EST 2014

SALES / LETTINGS / NEW HOMES / MANAGEMENT



Adelaide Road, Leyton
£1,800 Per Month
 1 bed, Flat



Upper Ground Floor

Total Area: 44.2 m² ... 476 ft²

All measurements are approximate and for display purposes only



Energy Efficiency Rating		Current	Potential
Very energy efficient - lower running costs			
(92 plus)	A		
(81-91)	B		
(69-80)	C		
(55-68)	D		
(39-54)	E		
(21-38)	F		
(1-20)	G		
Not energy efficient - higher running costs			
England & Wales		79	81
		EU Directive 2002/91/EC	



S/B

➔ E17 Office
 236 Hoe Street
 E17 3AY
 0203 397 9797
 hello17@stowbrothers.com

➔ E11 Office
 117a High Street
 E11 2RL
 0203 397 2222
 hello11@stowbrothers.com

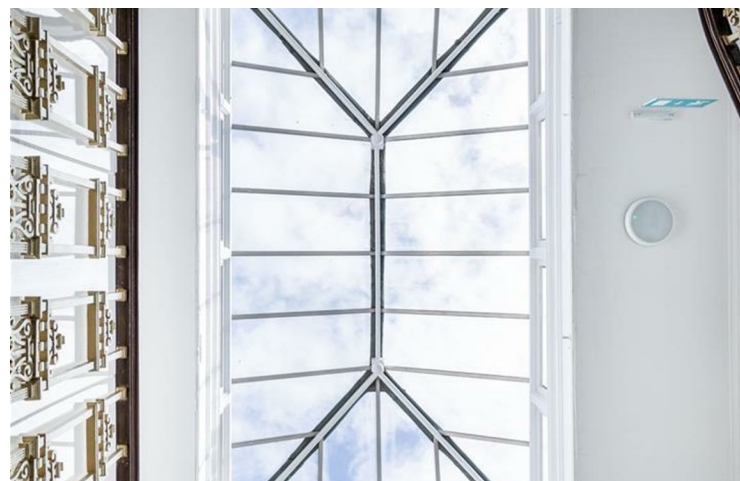
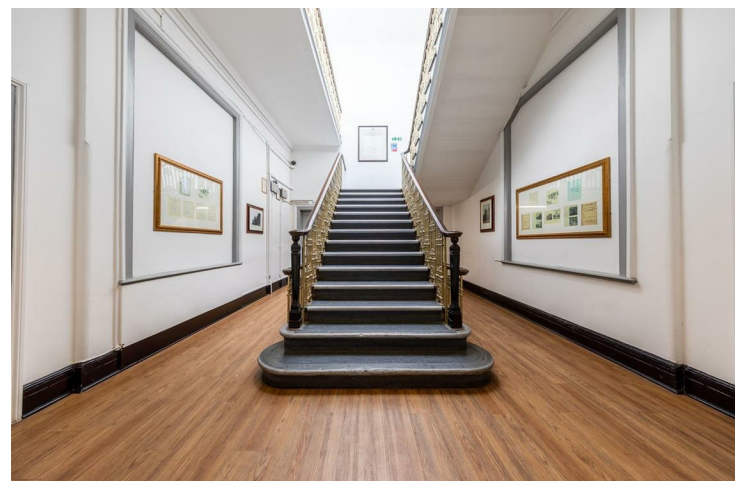
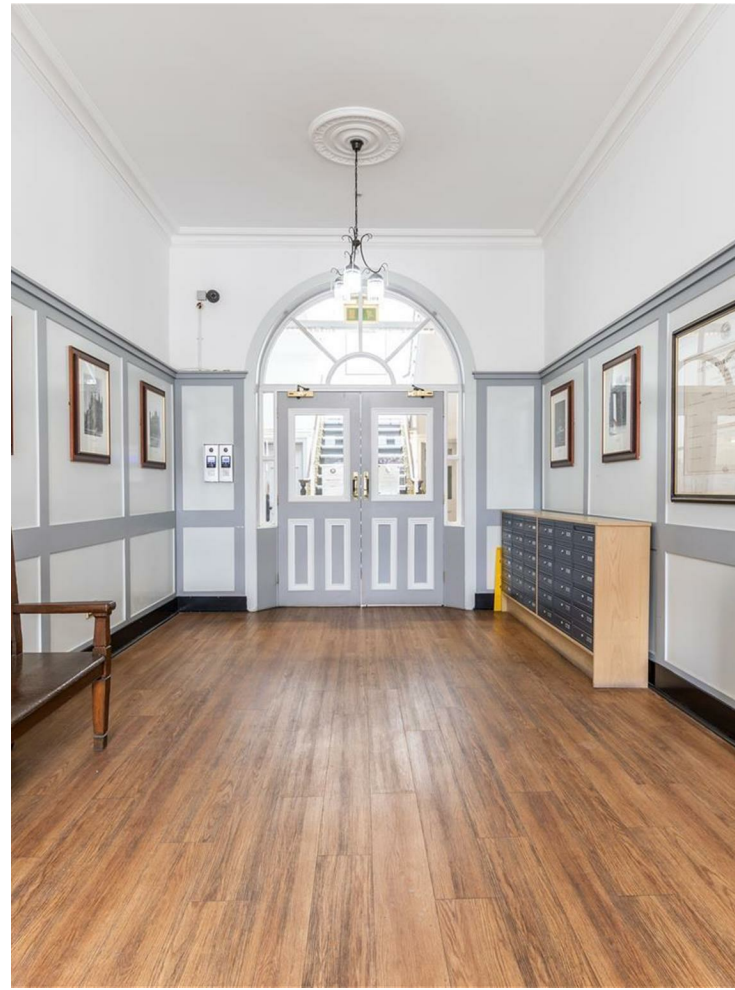
➔ E4 Office
 1 Bank Buildings,
 The Avenue, E4 9LE
 0203 369 6444
 hello4@stowbrothers.com

stowbrothers.com
 f i t @stowbrothers



Features

- One Bedroom Apartment
- Open Plan Kitchen Diner
- Bathroom with Shower Above Bath
- Large Windows
- Modern Kitchen Units
- Communal Yard
- Moments to Leyton Station
- Set Within a Historic Building
- Holding Deposit: equivalent to one week's rent capped at £400
- No Parking Available



Set within a striking Grade II listed Victorian landmark, this well considered one bedroom apartment sits on Adelaide Road, right in the heart of Leyton. You are moments from the High Road for everyday essentials, a short walk to the independent cafés and shops of Francis Road, and within easy reach of Leyton Underground station for swift Central Line connections. The wide open spaces of the Olympic Park are also close by, offering a welcome balance of city life and fresh air.

WHAT ELSE?

- Leyton station is just a few minutes away on foot, putting Stratford, the City and the West End within quick and direct reach.
- Leyton Mills Retail Park is nearby for supermarkets and practical shopping, while Westfield Stratford City offers everything from restaurants to cinema trips under one roof.
- For quieter moments, the Queen Elizabeth Olympic Park provides miles of walking and cycling routes, alongside open lawns and waterways.
- All of this sits alongside the character and presence of a landmark building that has been part of the local story since 1896, thoughtfully converted into distinctive homes in 2011.





➤➤ IF YOU LIVED HERE...

You would arrive through the building's impressive communal entrance, where original Victorian detailing sets the tone straight away. Inside the apartment, a central hallway gives you breathing room from the outset, with useful built in storage for coats, shoes and the bits you want tucked neatly away. The space then opens into a bright open plan kitchen and reception room, where large windows draw in plenty of natural light and emphasise the generous proportions. Modern kitchen units run along one wall with clean lines and integrated appliances, leaving ample space for a dining table and a comfortable seating area across warm wood flooring.

The bedroom is calm and well sized, with space for a double bed and storage, making it easy to settle in from day one. Soft light filters in through tall sash windows, while the bathroom is smart and unfussy, finished with a shower over the bath and simple, timeless materials. Throughout, the apartment feels thoughtfully arranged and easy to live in, with a reassuring sense of solidity that comes from its historic setting.

